

Theta Lambda News

Winner of the 2013-2014 Five-Star Award

Volume 45 Issue I

Area 18, #203

August 2014



Inside this issue:

President's Message	1
Meeting Information	1
Meeting Highlights	2
Summer Reading!	2
2014-15 Budget	3
Membership Renewal! Early Bird Special!!!!	4
Treasurer's Report	4
Committee Assignments	5
Area 18 Workshop Information	6

Editor: Carol TenBrook
cltenbrook@gmail.com

President's Message

Theta Lambda Sister,

I am looking forward to working together during the 2014-2016 biennium. Like a symphony we will make beautiful music with everyone contributing in a different way. Each of us using our talents and sharing our expertise will insure that Theta Lambda continues to be that "small but mighty" DKG chapter.

Laura and I took the heat and rain from here to the 85th State Convention in Lubbock and arrived back home with our minds overflowing with information and ideas for the coming year. Besides the sessions and meetings, we enjoyed nonstop talking and laughing, indulging in the local cuisine which included breakfast with the new International President Lyn Schmid, and picking up DKG goodies in the Exhibit Hall.



I challenge each of you to set a goal to faithfully attend DKG meetings and make a decision on how you will contribute to Theta Lambda this biennium. Mark your calendars in **red** for the upcoming area, local and state DKG events.

Saturday, September 13 - Area 18 Workshop at Northeast Christian Academy on Hamlin Road in Kingwood from 9-12 with a choice of 2 sessions. Registration begins at 8:00 with our chapter working the Presenter's Table. Registration is \$12 which can be paid at the workshop. RSVP to Sandra MacConnell if you plan to attend by Thursday, August 23. Bring a contribution for Ronald McDonald House.

Monday, September 15 - Theta Lambda Meeting "Stay Connected through Memories" at the home of Stacy Frenchwood.

January 16-18 - STAR Weekend Creative Arts Retreat for DKG members, relatives and friends at Camp Allen in Navasota. The cost for the weekend is \$200 which includes room and meals.

Delta Kappa Gamma Society International is a unique group of committed women focused on service and education. This is what attracted me to become a member and the reason I decided to serve as president of our chapter. Join me as we work together for Theta Lambda.

Respectfully,
Nancy Dobbs

Come join us for

Theta Lambda's September meeting!

Where: Home of **Stacy Frenchwood**

When: **Monday, September 15, 2014**
5:30 Refreshments
6:00 Business meeting

Hostesses: **Jayati Sengupta**
Mary Harris

Inspiration: **Sandra MacConnell**
Program **Stay Connected Through Memories**

Carol TenBrook, Catherine Hague

The Delta Kappa Gamma Society International promotes professional and personal growth of women educators and excellence in education.

Meeting Highlights

Minutes for Theta Lambda Meeting, May 19, 2014

On Monday, May 19, 2014 Theta Lambda members gathered in the home of Jayati Sengupta for the last meeting of the year. The meeting was called to order at 6:05 p.m. by President, Laura Downes. Jayati Sengupta and Sister Jane Meyer were thanked for hostessing the meeting.

Robin DeLaRosa presented the energizer. She read from the book, The Last Lecture by Randy Pasche.

Old Business: Change for Africa and materials for the mission trip to Africa were discussed. \$375.00 was collected for the St. Agnes orphanage mission project. Two hundred seventy-five children are served by this project. Sister Jane will share the experiences of the mission trip at a Delta Kappa Gamma meeting this fall.

Stacy Frenchwood was acknowledged for the fun we had at the birthday luncheon in April.

New teacher end of school incentives were made to encourage the new teachers in our community. Laura will organize the new teacher project for the next school year.

Sandra MacConnell presented the Treasurer's Report.

The Delta Kappa Gamma State Convention will be attended by Laura Downes and Nancy Dobbs. The Star Workshop Weekend at Camp Allen will be in January 2015.

The Annie Award will feature the "Open Gate" project. The PACE application is in and the Newsletter and Yearbook for the chapter received "5" star awards. Laura said, "We are small, but mighty!"

The October 2014 meeting was reviewed. It will be on The Laura Line by Crystal Allen. An excerpt was read.

Sandra MacConnell was recognized for having 100% attendance and Laura Downes only missed one meeting.

The GHACC spring meeting was held at St. Phillip's Presbyterian Church. It was announced that the chapter rules are being revised.

September 13, 2014 is the Delta Kappa Gamma Area Workshop. Members are asked to help at the presenter's table and escort them to the room locations. In lieu of door prize expenses, contributions can be made to the Ronald McDonald House.

Catherine Hague presented the Founder's Day Program.

Out-going President, Laura Downes was presented a plant, frame, and gift cards.

The officers for the 2014-16 biennium were installed. They are President, -Nancy Dobbs, First Vice President- Stacy Frenchwood, Second Vice President, -Robin DeLaRosa, Secretary-Michelle Glick, and Sandra MacConnell, Treasurer.

The meeting was closed following the installation of officers at 7:45 p.m.

Written by Lillie Beth Wilson, Secretary

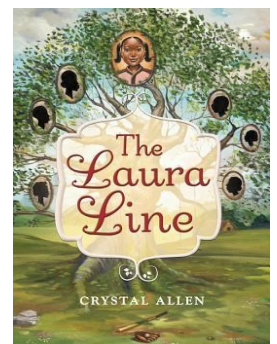
YOU STILL HAVE TIME TO READ!!!

Please be sure to read *The Laura Line* by Crystal Allen.

"Thirteen-year-old Laura Dyson wants two things in life: to be accepted by her classmates and to be noticed by ultra-cute baseball star Troy Bailey. But everyone at school makes fun of her for being overweight, and Troy won't give her a second glance."

Author Crystal Allen will be our guest speaker at our October meeting.

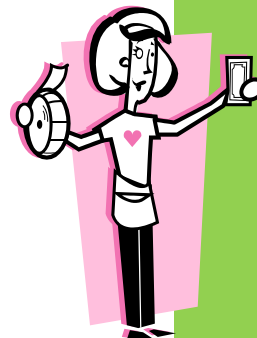
The book is available from Amazon in hardcover for \$13.23, or Kindle version for \$9.78.



THETA LAMBDA			
BUDGET 2014 - 2015			
Balance on hand at beginning of fiscal year:			\$755.41
<u>Receipts</u>			
Dues/Fees			\$1,762.00
22 Active Members at \$75.00 =	\$1,650.00		
4 Reserve Members at \$28.00 =	\$112.00		
1 Honorary Member at \$00.00 =	\$0.00		
	\$1,762.00		
Raffles/Fund Raisers			\$500.00
Bank Dividends			\$3.00
		Estimated Receipts	\$2,265.00
		Total Available Funds	\$3,020.41
<u>Disbursements</u>			
Alpha State and International Dues			\$1,428.00
22 Active Members at \$60.00 =	\$1,320.00		
4 Reserve Members at \$27.00 =	\$108.00		
1 Honorary Member at \$00.00 =	\$0.00		
	\$1,428.00		
Required Scholarship Fees (26 x \$1.00 per active & reserve member)			\$26.00
Contributions to State Funds			
Scholarship Fund - Honors Status	(27 x \$1.00 per active, reserve, honorary member)		\$27.00
Leadership Fund - Journeyer Status	(27 x \$1.00 per active, reserve, honorary member)		\$27.00
Eula Lee Carter Memorial Fund			\$10.00
Alpha State Texas Educ. Foundation	(27 x \$1.00 per active, reserve, honorary member)		\$27.00
Contributions to International Funds			
Emergency Fund			\$25.00
Educational Foundation, Golden Gift, International Speakers Fund, World Fellowship (\$10 ea.)			\$40.00
Schools for Africa			\$25.00
Yearbook (Mail-Outs to Reserve Members)			\$25.00
Newsletter (Mail-Outs to Reserve Members and State Personnel)			\$50.00
Social (Christmas/Birthday Luncheon)			\$100.00
Chapter Project			\$100.00
President's Convention Expense			\$300.00
Members(s) Convention Expense			\$300.00
Postage/Supplies/Committee Expense			\$100.00
Miscellaneous (gifts for speakers/guests/early career educators, door prizes)			\$100.00
		Estimated Expenses	\$2,710.00
Projected Year End Balance:			\$310.41

TREASURER'S REPORT
August, 2014

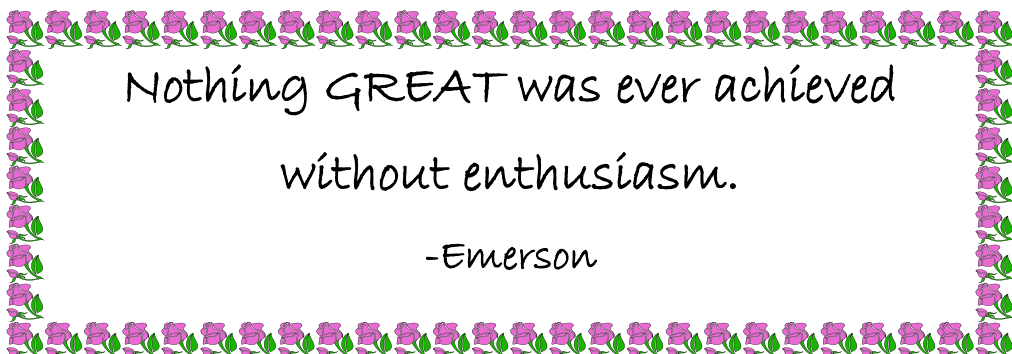
Checking balance reported in May	\$ 948.90
Receipts	+ \$ 211.67
Donations for St. Agnes Africa project	\$211.00
Dividend (May - July)	.67
Disbursements	- \$ 405.00
St. Agnes Academy - Kisumu	\$375.00
President's Gift	30.00
Current checking account balance	\$ 755.57
Current Savings Balance	\$1049.71
Current CD Balance	\$1559.54
Total assets of chapter	\$3364.82



“Early Birds Only “
Door Prize

In order to encourage everyone to bring their dues by the first meeting, there will be a drawing for a door prize!

When Sandra MacConnell, our treasurer, receives your check, she will enter your name into the drawing. You do not need to be present to win— **BUT....your dues does!!**



It's time to renew your membership in The Delta Kappa Gamma Society International.

Please come prepared to pay your dues at our September 15th Chapter Meeting.

The amount is \$75 for active members and \$28 for reserve members.

If needed, you may meet your obligation in two payments by writing two checks and post-dating one for October.

Make checks payable to Theta Lambda Chapter – Delta Kappa Gamma.

If you are unable to attend the September meeting, please mail your dues payment to Sandra MacConnell, chapter treasurer.

Let's be an “early bird” and get our dues sent in to State/International before the deadline. **SEE DOOR PRIZE INFORMATION ABOVE!!!!**



Delta Kappa Gamma - Theta Lambda

2014-2016 Committees

Society Business

Archives – Chair Mary Herlitz, Sandra MacConnell, Laura Downes, Carol TenBrook

Bylaws and Rules – Chair Sandra MacConnell, Lillie Beth Wilson, Jan Randolph

Ceremonies – Chair Lillie Beth Wilson, Catherine Hague, Cheri Flick, Jodi Knuppel

Communication/Publicity– Chair Carol TenBrook, Laura Downes, Michelle Glick, Nancy Dobbs

Finance– Chair Mariam Watson, Nancy Dobbs, Laura Downes, Sandra MacConnell (ex officio)

Membership/Necrology– Chair Jan Randolph, Robin DeLaRosa, Sandra MacConnell, Miriam Watson

Social/Courtesy – Chair Robin DeLaRosa, Mary Harris, Stacy Frenchwood, Ellen Rothberg, Sr. Jane Meyer, Teri Marrow

Nominations – Chair Catherine Hague, Sally Kubiak, Jan Randolph

Yearbook – Chair Sandra MacConnell, Nancy Dobbs, Stacy Frenchwood, Robin DeLaRosa

Society Missions and Purpose

Achievement Award – Chair Laura Downes, Jan Randolph, Carol TenBrook

Educational Excellence– Chair Stacy Frenchwood, Sr. Jane Meyers, Michelle Glick, Mary Harris, Sally Kubiak

- **Global Awareness**—Chair Sr. Jane Meyer, Sally Kubiak, Jodi Knuppel, Michelle Glick
- **Programs /Service Projects** – Chair Stacy Frenchwood, Robin DeLaRosa, Nancy Dobbs, Sally Kubiak
- **Personal/Professional Enrichment** – Chair Michelle Glick, Carol Ann Shipp, DaNell Wilkins, Sr. Jane Meyer
- **Music** – Chair Mary Harris, Catherine Hague, Carol Ann Shipp, Mary Herlitz
- **Legislation** – Chair Sally Kubiak, Jodi Knuppel, Lillie Beth Wilson, Jayati Sengupta

Scholarship – Chair Jayati Sengupta, Ellen Rothberg, Teri Marrow, Carol Allin

Saturday, September 13 - Area 18 Workshop at Northeast Christian Academy, 1711 Hamlin Road in Kingwood, Texas 77339 from 9-12 with a choice of 2 sessions. Registration begins at 8:00 with our chapter working the Presenter's Table. Registration is \$12 and can be paid at the workshop but *if you register you must pay whether you attend or not*. Bring a contribution for Ronald McDonald House, which supports families of seriously ill children at Ronald McDonald House of Albany & Ronald McDonald House Family Room. Plan to carpool with sisters living in your area.

RSVP to Sandra MacConnell, sandra@glenngraphics.com by **Thursday, August 23**.

Please come to the Area 18 Fall Workshop

Saturday, September 13, 2014

8:00 a. m. - 12:30 p. m.



\$12 per chapter member in attendance

Breakfast snack and Coffee

Northeast Christian Academy

1711 Hamblen Road

Kingwood, Texas 77339

Training for 2014-2016 chapter officers and committee chairmen

A "Must Attend" event for your chapter members

Area 18 Workshop Schedule

Saturday, September 13, 2014

- | | |
|----------------------|---|
| 8:00 – 8:50 | Registration
Breakfast snacks and Coffee
Vendors |
| 9:00 – 9:45 | Opening General Session |
| 9:50 – 10:35 | Breakout Sessions 1 |
| 10:35 – 10:55 | Break
Vendors and snacks |
| 10:55 – 11:40 | Breakout Sessions 2 |
| 11:45 – 12:30 | Closing General Session |

WISH LIST

RONALD MCDONALD HOUSE CHARITIES®

TOYS/KID'S ACTIVITIES

Tablet for Internet/Games

FOOD NEEDS

100% Juice Boxes or Pouches
Keurig K-Cups
Microwave Soups
Individual Sized Cereal
Cereal Bars/Granola Bars
Fruit Cups
Microwave Mac & Cheese
Microwave Pasta

PAPER PRODUCTS

Paper Bowls & Plates
Plastic Forks and Spoons
Paper Towels
HOUSEHOLD SUPPLIES
Laundry Detergent
Fabric Softener Sheets
Antibacterial Kitchen Cleaner
Disinfectant Wipes

TOILETRIES/MEDICATION

Hand Sanitizer
Ibuprofen (Small Bottles)
Acetaminophen (Small Bottles)
Tums/Antacids (Small Rolls)
CVS/Walgreens Gift Cards

MISCELLANEOUS

Teaspoons
White Corelle Cereal Bowls
Large Frying Pans
Large Ziploc/Gladware Food Storage Containers

GIFT CARDS

Gas Cards
Price Chopper, Hannaford
Walmart, Home Depot,
Lowe's, Stewarts, Target
MONETARY DONATIONS
ALWAYS WELCOME!